

La Entrada News

Issue 4, June/July 2020

Published by the La Entrada Communication Committee

La Entrada Manager

Serenity Lucero
Office: 505-954-4479
Fax: 505-954-0018



slucero@hoamco.com
1421 Luisa Street, Ste. R
Santa Fe, NM 87505

La Entrada Board

President
Cass Thompson
505-473-7700

cass@ranchoviejo.com

Vice President
Paul Dillon

pauldillon87508@gmail.com

Peter Kempf
Dir Sales & Marketing
505-473-7700
peter@ranchoviejo.com

La Entrada News

Lisa Marcato, Editor/Layout

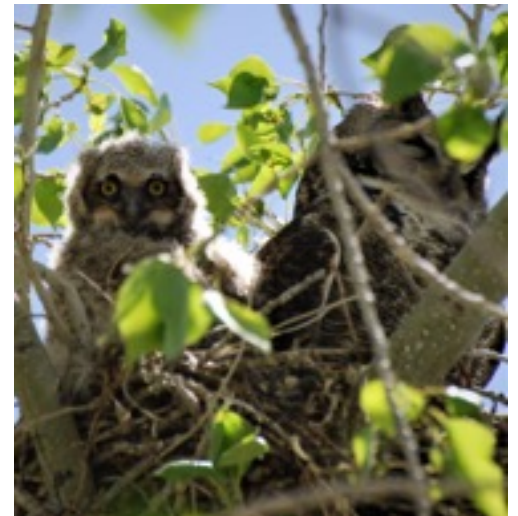
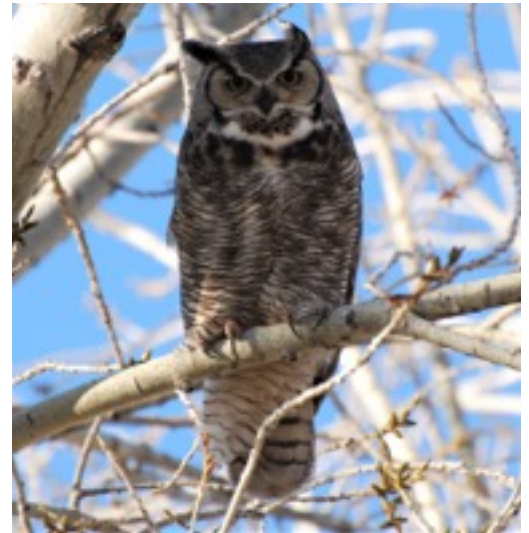
Where's Waldo? *and* You've Got Neighbors

by

Van and Maggie Liming

Maggie and I first noticed a female Great horned owl in a Cottonwood tree in the Rancho Viejo Village Plaza on Feb 21st. She had taken up residence in a 2-year old Cooper's Hawk nest. Great horned owls usually mate for life and don't build nests. In mating season it's the male's job to find a suitable nest in January or February, and then seek the female's approval. Based on the small size of this year's nest, "pickings must have been slim" this year.

The male has been in an adjacent tree every day. During our morning walk, Maggie and I play "Where's Waldo." As the trees continue to leaf out, he is getting harder and harder to find.



Owls, Continued

At first the female stays on the nest and the male does all the hunting at night. But the past few weeks after hatching her eggs, she's been leaving the nest after sundown to help hunt for food.

Being nocturnal owls sleep most of the day. That changes when the babies require daytime feedings. The female accesses a cache stored in the nest and feeds her babies small tidbits. Now the single surviving baby is big enough to feed itself.

For the past several days the baby has been "branching out" onto limbs connected to the nest. This stage usually precedes beginning flight by about a week or two. The owls will probably be gone in early June.

ew!

PROTECT YOUR TREES!



Look up at your trees. If you see large web nests, web worms (also called Eastern Tent Worms) have infested your tree(s). They will eventually kill your tree(s). These worms leave the nest during the day and travel along the branches eating the leaves.



To get rid of them, wait until dawn or dusk, when they're back in the nest. Either cut off the infested limb and bag it in plastic, tie it tight, and put it in the trash, or use a wasp spray that can shoot 20-30 feet and spray the nest on a windless dawn or dusk. It will kill the worms if you saturate the nest, but the ugly nest will remain.

La Entrada residents,



Are you bored?
Are you artistic?
Do you like to dabble in
fun and easy artsy
projects?

Well then, have we got
something for you!



***You* are Cordially Invited to Participate in a
Rancho Viejo/La Entrada first-ever**

Rocks of Kindness Project!

In light of the COVID-19 pandemic and curtailment of so many social, cultural, and sports activities, the Communication Committee would like to invite all artistically-inspired residents to '[Paint a Rock of Kindness](#)' to be placed in various locations throughout the community, some of which are already on view at the north side station of mailboxes on Villa Agua Clara.

This is a sad time and as a community, we seek to bring uplifting messages, cheerful colorful images, or anything that will bring a smile to our faces. Let's show how much we care for loved ones lost and/or ill, and all our first responders by spreading the joy a little rock can pass on! ! If this appeals, read on to find out more about this project and how you can participate.

How to Make Rocks of Kindness here in La Entrada

You will need:

- River rocks
- Acrylic paint 2 oz. bottles – you can purchase small bottles of paint at Walmart in the craft dept., Michaels, Hobby Lobby. You need white or a light color for the basecoat and a variety of other colors
- Paint brushes
- Sharpie Markers (permanent markers) Black and different color Sharpies
- Water - to keep the brushes from drying by putting them in a cup of water
- Paper towels

Steps:

1. Find a river rock (if you want to do a lot, you can buy a bag of rocks at Home Depot and Lowes)
2. Wash the rock
3. Base coat the rock with white or a light color acrylic paint
4. **Option A:** Paint designs on the rock with acrylic paints and let dry
5. **Option B:** Draw designs in colored Sharpies on the dry light colored rock
6. Add text or quote in Black Sharpie on the rock.
The words need to be uplifting and positive, nothing controversial or political.
7. Be sure the paint brushes do not dry out – keep in water or a zip lock bag because once the paint dries, it cannot be washed out.
8. Place finished rocks by Message Centers near the Mailboxes. The La Entrada Communication Committee will place them throughout La Entrada in a variety of locations.
9. Check out these ideas!



For location distribution and more information please call Sally at
1-630-244-3805





Let's All Have a Piece of that Pie, Shall We?

by Sarah Henderson



Like gravity, the decennial census is not just a good idea, it's the law. Mandated by the Constitution, the first one was in 1790. Used to produce statistics, your responses cannot be used against you by any government agency (including ICE). A high standard of cybersecurity is maintained, and Census Bureau staff are under a legal obligation (with severe penalties if breached) to keep your information safe.

The statistics provided by census results determine the reapportionment of the House of Representatives, and reflect population shifts to drive state redistricting. The information provided is used in the distribution of federal funds for grants to states, counties and communities for schools, roads, hospitals and public works. The data is also used by states themselves to guide their funding.

Forecasting and planning are important objectives of analyzing the census results. Future government services, transportation needs, budgets, housing, health and educational services, rural development needs, so many are impacted by census results. Here is one use of the data that is certainly apropos: "Assessing the potential for spread of communicable diseases".

So it seems rather important to stand up and be counted. Let's get our piece of the 675 billion dollar pie!

Santa Fe County Food Distributions

The Food Depot <https://www.thefooddepot.org/>

Novel Coronavirus (COVID-19)

Update: April 29, 2020

New food distributions in response to COVID-19

In response to the increased community need for food, The Food Depot is announcing the following drive-thru food distributions which are open to the public:

Thursdays, from 6 a.m. to 9 a.m., The Food Depot parking lot, 1222 A Siler Rd. (in collaboration with Feeding Santa Fe)

Saturdays

The Food Depot (in collaboration with Feeding Santa Fe) Drive-Thru Distribution
1222 Siler Rd, behind the Col Green Angel Depot – enter from the north entrance

The Food Depot parking lot, 1222 Siler Rd., **May 2, 16, 30: 9 a.m. to 11 a.m.** (Not Commodity) and **May 9*, 23***, at Santa Fe Place Mall, **9 a.m. to 11 a.m.** (Commodity)

* indicates a USDA commodity foods distribution. Recipients should be prepared to provide their name, address, and household information including income. The Food Depot is an equal opportunity provider.

The Food Depot is an [equal opportunity provider](#).

There is no longer a food distribution at Capital High School.

These food distributions will continue weekly until further notice. People seeking food assistance should be prepared to provide basic information including giving their name, address and self-declaring their income (no documentation required). Times are subject to change, and food distribution will close if the food runs out before the end time.

The Food Depot

1222 A Siler Road

Santa Fe, New Mexico 87507

Telephone: 505-471-1633

The Food Depot is a 501(c)3 and a non-partisan organization

Fax: 505-471-2025

Email: info@thefooddepot.org

Additional Resources for the Covid 19 World

by Sally Dillon

1. **Restaurant list from Pasatiempo** - each Friday, Pasatiempo Magazine with the Santa Fe New Mexican, has a list of restaurants that have takeout, curbside pickup, delivery, and other Restaurant Options - https://www.santafenewmexican.com/news/coronavirus/takeout-curbside-delivery-and-other-restaurant-options/article_aaa124aa-9397-11ea-8aa4-570782ed77aa.html
Check with restaurants for updates on service and hours as the Public Health Orders change.
2. **Hand Sanitizer in our community at Tumbleroot Brewery and Distillery**, 9 Bisbee Ct. - <https://tumbleroot.square.site/>
3. **Santa Fe Public Library** – need some new video content or free eBooks or audiobooks, got to <https://santafelibrary.org/> , get a digital library card (after the health order is lifted, pick up your card at the downtown branch within 30 days.) On the home page for the site, pull down the Research Resources and click on E-Resources, scroll down to see the digital options.
4. **Audible Stories** – free audiobooks for kids - <https://stories.audible.com/start-listen>
5. **Online board games links** – **Attention Parents – preview websites before letting you children play games**
 - a. Twelve Board Games You Can Play with Friends From Afar - <https://www.smithsonianmag.com/innovation/twelve-board-games-you-can-play-friends-afar-180974686/>
 - b. 12 Classic Board Games you can Play Online with Friends and Family - <https://www.insider.com/classic-board-games-play-online-download-mobile-multiplayer>
 - c. Free Online Games for Kids - <https://kids.poki.com/> **Parents preview these sites.** Board Games - <https://poki.com/en/board>





Rancho Viejo Neighborhood Watch

by Watch team in La Entrada

Be safe, be sensible, take care of yourself and your neighbors!

Not everyone is staying home! Just a word of caution that while the Rancho Viejo community is a very safe place to live, there have been reports of night time visitors checking cars parked outside and even a front door or two. Petty criminals have lost many ways of obtaining cash and goods due to the shelter-in-place orders.

The best actions you can take to avoid being a victim of theft are to keep your home doors and windows locked, and if you do park on the street or in your driveway, don't leave valuables in the vehicle and make sure it is always locked.

Many of us have turned to on-line shopping now that stores are closed. Track your deliveries and bring them inside as soon as possible; avoid leaving them on your porch.

If you see something suspicious, don't hesitate to call the Sheriff's Department. The non-emergency number is 505-428-3720. In case of emergency, dial 9-1-1.

There has also been an increase in the number of phone scams. Do not give out personal information, credit card information and don't believe the claims that you are about to be arrested or that you haven't paid a bill. If it seems suspicious, it probably is.

The shelter-in-place order doesn't mean we are disconnected. There are many ways to keep informed:

- * If you haven't already done so, sign up for the Neighborhood Watch updates by contacting Carol Thompson at CAROLATH@msn.com. Note that recent alerts as of May 15 were emailed on April 21 & 22 & are included on laentradaatranchoviejo.org at What's New/Announcements. Choose the Category of "Rancho Viejo Neighborhood W"

- * Go to www.nixle.com Register your name to receive the latest alerts about serious traffic problems, crimes, natural disasters and other emergency notifications from the Santa Fe County Sheriff's Department.

- * Download the free app **Nextdoor** to your mobile phone. You will be able to post questions and get answers about many topics from gardening, lost pets, and business recommendations to items for sale or give-away. It's a great way to network with your neighbors in Rancho Viejo and other areas.

It's always a good idea to look out for your neighbors. Call first and don't forget to social distance, wear a mask and wash your hands.



La Entrada Communication Committee Report June 2020

by Sally Dillon

Well, we are still at home, but businesses are gradually opening. As of this writing, we still have our Stay at Home Order. Mass gatherings are limited to 5 people, so we are not planning events yet. Any events we are able to plan will align with the state's Public Health Order, and likely include face masks and social distancing. Events would also be altered to align with any safety measures that are or would be put in place. So, no events planned for now.

You will, however, be reading about our *Rocks of Kindness* project in this newsletter. This is an activity we can do separately but also together by working on the common theme of 'uplifting messages.' River rocks can be painted with acrylic paint or drawn with Sharpie markers and left at the Message Centers for the Communication Committee to allocate and dispense to La Entrada Parks, mailbox stations, and common areas.

Just because we are at home doesn't mean things aren't happening. Van Liming who has followed the Great Horned Owl family in the Village Park, shares an article and some incredible photos with us. We also have an additional photo from a community member. We also have some additional resource links for you as we stay at home.

If you have an article you would like to be included in the newsletter, please send it to Sally Dillon arttrek@prodigy.net by the 15th of Jan, March, May, July, Sept, and Nov. It needs to be in Word or Pages and completely ready for publishing. "Completely ready for publishing" means formatting, editing, captions, logos, active web links, etc. The photos and article need to be attached in an email to Sally by the 15th at the very latest. The Communication Committee, that works as a team in assisting publication of the newsletter, will determine if there is room for the article depending upon space constraints and content. The editor and the committee reserve the right to edit and/or include submitted articles. If approved by the Communication Committee, the article will go in the next newsletter. If it is submitted after the deadline, it may be placed in the next following issue of La Entrada News unless it is time sensitive content that is now after the fact or not approved. The reason we have these deadlines is to align with our schedule for publishing. We have specific tasks to accomplish and events to plan. If a submission is late or not "completely ready for publishing," it throws off what we need to get done for publishing.

Also, if you have suggestions, ideas, or concerns for the Communication Committee to address or take on, please send them in writing to Serenity Lucero Slucero@hoamco.com. She will send them to the HOA Board, who in turn, will send them to the Communication Committee, if applicable. This procedure streamlines the processes for the Communication Committee and is effective immediately.

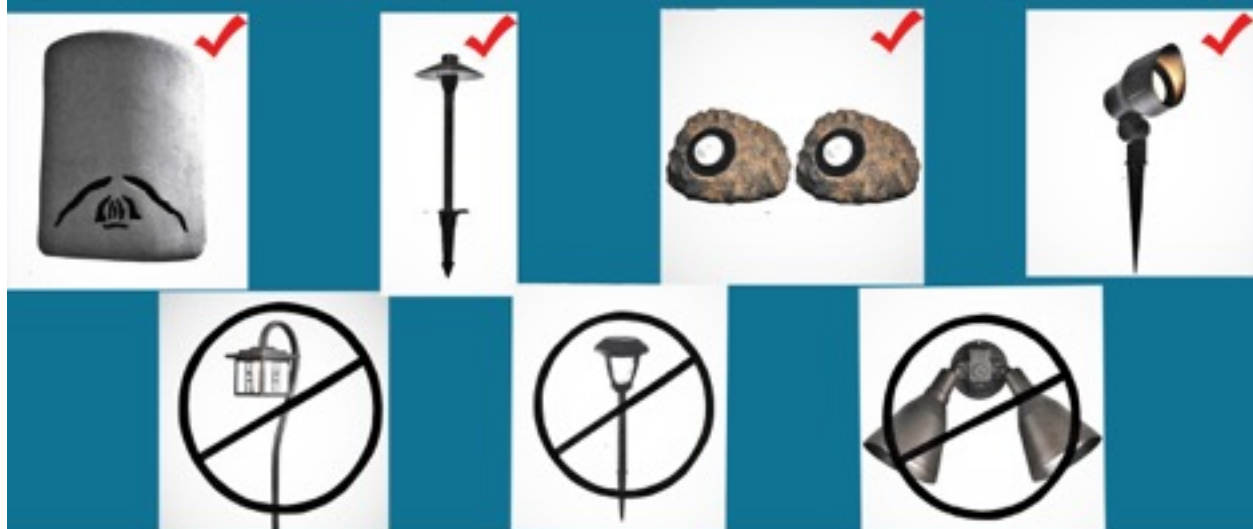
La Entrada News is published, generally around the beginning of the publishing month and it is also posted on the La Entrada website at <http://www.laentradaatranchoviejo.org/home.asp>. An email blast from HOAMCO is then sent out to residents with the website URL and directions to locate the newly published newsletter. If you have any questions or concerns, please contact Serenity, our HOAMCO Manager of our HOA at Slucero@hoamco.com

Rancho Viejo is a NIGHT SKY COMMUNITY

A few ways to protect our night sky views and be compliant:

Makes sure your residential light fixture bulbs are shielded and directed down and never towards a neighbor or the street.

Enjoy the Night Sky


















*** If you can see the lightbulb, then it is non-compliant***

**Reference: La Entrada Homeowners Handbook, pg. 14, paragraphs 1-7
Santa Fe County "Night Sky Ordinance" is available at the
Association office.**



BACKYARD SCAVENGER HUNT

Can you find all 15? Color in and check the boxes

 ACORN <input type="checkbox"/>	 DIRT <input type="checkbox"/>	 SQUIRREL <input type="checkbox"/>
 SUN <input type="checkbox"/>	 BEE <input type="checkbox"/>	 TREE <input type="checkbox"/>
 BIRD <input type="checkbox"/>	 LEAF <input type="checkbox"/>	 WORM <input type="checkbox"/>
 TWIG <input type="checkbox"/>	 CLOUD <input type="checkbox"/>	 FLOWER <input type="checkbox"/>
 WATER <input type="checkbox"/>	 GRASS <input type="checkbox"/>	 FEATHER <input type="checkbox"/>



Rancho Viejo Ladies Group

April & May 2020 Activities

By Audra Hansche – Mauied85@AOL.com

While the RV Ladies Group social activities have been on hold, we were still able to accomplish some wonderful things.

This year Easter fell in April. In lieu of our usual event of dyeing eggs and donating them to Pete's Place, we opted for a campaign of monetary donations. I can report donations of \$280. Plus a special memorial donation of \$250. For a total of \$530. Our ladies have loving generous spirits.

Book Club for April was held as a discussion on Zoom. Wardene lead our talk about The Hidden Life of Trees by Peter Wohlleben. It was super to see friends again. I think everyone enjoyed the book, at least some ideas in it. Follow up information was shared about ancient trees and big trees, some located in NM.

During April, I also encouraged everyone to let me know how they are managing during this time at home. Many were generous to write to me about their projects. I created a **RVLG Newsletter** of sorts and returned a copy to those that participated. We learned a lot about each other this way. Each in her own words and thoughts. I may repeat this effort in a few weeks. *What have you been up to lately?*

Near the end of the month I felt like some fresh air was in order. I planned a date for some **Nurture & Nature** at the park in the Village section and invited those that felt comfortable to come by. I took a picnic lunch, sat in the shade and walked a lap around the perimeter of the park. There were actually 9 ladies that joined me. We sat distanced apart, some wearing masks and were able to chat for about an hour. It felt good to see familiar faces. I hope to plan another similar outing in a short while.

Since we are not allowed to gather in close proximity, we had to cancel our work day at **The Food Depot** that was planned for Thursday, May 21st. In lieu of this event, everyone was emailed and encouraged to donate funds. When it was near to the day, Sally received a notice that if you made your donation on that date, Thankful Thursday, the amount would be matched not once but twice!! So awesome! It feels good to help our neighbors in need.

I hope we are able to make some plans going into June. For now you might be reading our next **Book Club** selection: Red Notice by Bill Browder. In a couple of weeks we will check with Jeanne if we are to have our discussion online or some other way.



Recycling Reminders

Paper, clean plastics and cardboard can be mixed together in the cart. However, No **GLASS** should **ever** be put into the recycle bin.

June

3
and
17



July

1
15
and
29

If a specific homeowner does put glass into his recycling cart on a regular basis they will be warned, and, should that practice continue, MCT will no longer provide recycle pick-up at the home. Also please note that the garage cart and recycle cart need to be placed at least 3 feet apart.

In **June**, recycle pick-ups will be on **June 3 and 17**, and **July** pick-ups will be on **July 1, 15 and 29**.

If you have any further questions, you can call MCT at 505-345-8651 or check out their website at www.mctwaste.com.



Photo credit: Kris Jameyson

Please Pick Up After Your Pet!

It doesn't take much to remember that we have pets in our community. In fact, if you don't watch your step, you are liable to step in one such reminder. Besides being unsightly and smelly, animal waste can be hazardous to the health of our children who play in the community and other pets. One of the most common forms of disease transmission between dogs is through fecal matter.

When walking your dog in our community, remember that it should be leashed. Also, it is important to remember to immediately clean up after your pet. Take along a baggie with you or get one from the "doggie stations" to pick up waste and then dispose of it properly.

By taking a few simple steps to clean up after your pet, you can contribute not only to the beautification of our community, but also towards the elimination of one of the most irritating nuisances in our community. Thank you for your cooperation!



La Entrada Calendar

Board Meeting, 6:00pm
Thursday, **TBD**
RV Fire Department
Community Room
37 Rancho Viejo Blvd.

Neighborhood Watch Local Contacts

Carol Thompson
Area Coordinator RV
Neighborhood Watch
Home: 471-9044
Cell: 603-0833
Email: carolath@msn.com

See anything Suspicious?

Call County Sheriff's Office:
428-3720.
If you wish to remain
anonymous, call Crime
Stoppers: 955-5050.

Large Item Pickup

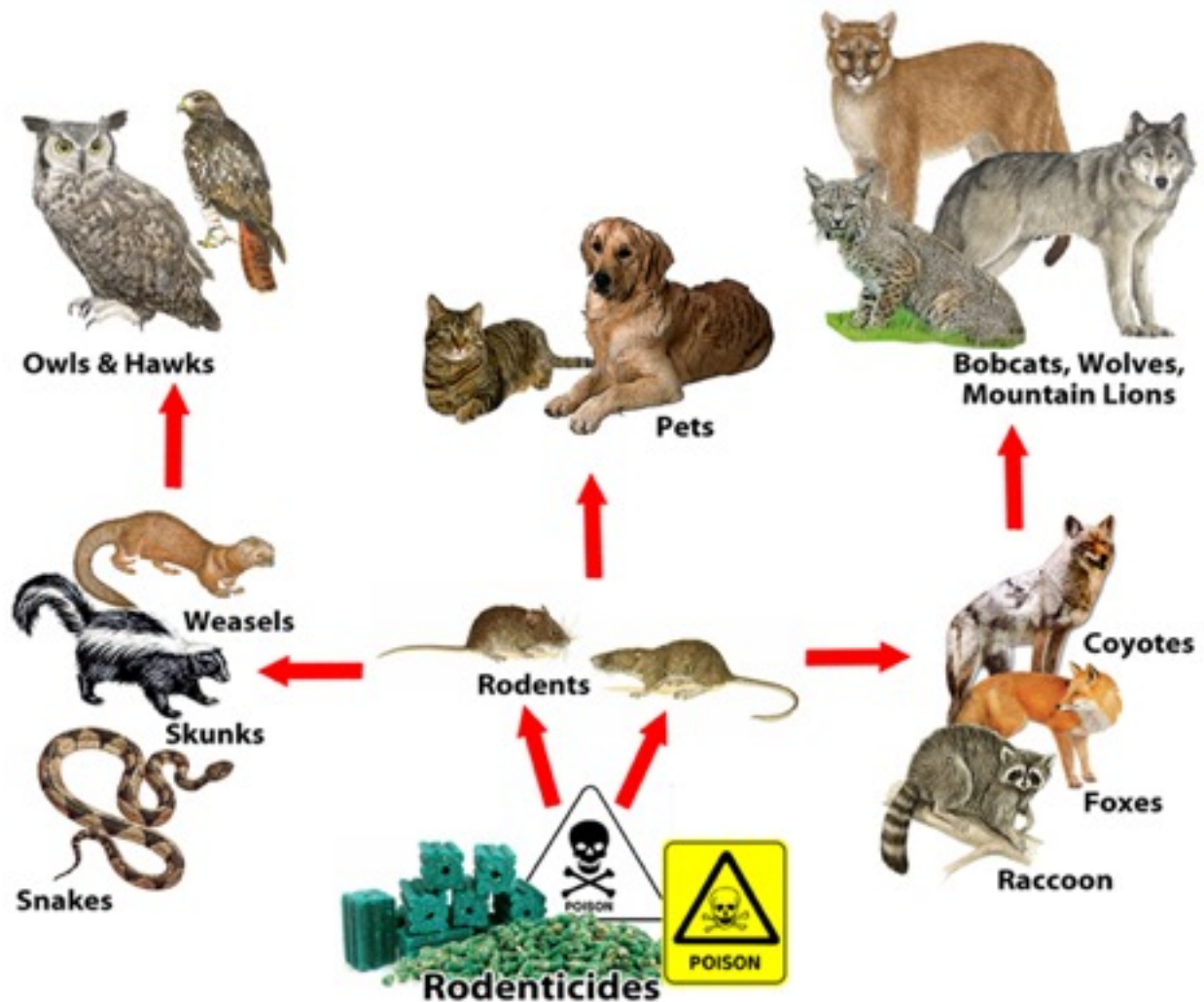
The date for large item pick up within La Entrada residential areas is the third Friday of each month. The next date of service will be **Friday, June 19 and July 17, 2020.**

Residents must call Serenity Lucero at 505-954-4479 before the date to arrange for large item pick up. Please provide your address, telephone number and description of item(s). Remember to sign up no later than the Monday prior to the Friday pick up date.

Types of items allowed: furniture, yard waste, appliances.

Not Allowed: Most electronics, oil or household chemicals.

Here's What Happens to Other Animals When You Put Poison Out for Rodents



Please consider where you are dispersing poison and if other animals might be impacted.

COVID MEMES



me after hearing someone cough on
my \$8 round trip flight to italy



Fear of coronavirus is on the decline?



RELEASE THE MURDER HORNETS.





COVID ART MUSEUM ON INSTAGRAM

