

# La Entrada News

REPORTED BY THE THE RANCHO VIEJO LA ENTRADA COMMUNITY ASSOCIATION

August 2016 - September 2016

Serving the Residents of the La Entrada Community



## La Entrada Manager

Michael Smith  
Office: 505-954-4479  
Fax: 505-954-0018  
[msmith@hoamco.com](mailto:msmith@hoamco.com)  
1421 Luisa Street, Ste. R  
Santa Fe, NM 87505

## La Entrada Board

President  
Cass Thompson  
505-473-7700

[cass@ranchoviejo.com](mailto:cass@ranchoviejo.com)

Vice President  
Paul Dillon  
505-471-3987

[pauldillon87508@gmail.com](mailto:pauldillon87508@gmail.com)

Secretary/Treasurer  
Alina Catanach  
505-473-7700

[alina@ranchoviejo.com](mailto:alina@ranchoviejo.com)

## La Entrada News

Pat Barnes, Editor  
Daniel Johnsen, Design,  
Layout, Typesetting  
Lisa Marcato, Trainee

## Rancho Viejo Ladies Lunch Group Makes Goodies for Raptor Release Fundraiser

By Sally Dillon



On June 29th Audra Hanshe, organizer of RV Ladies Lunch Group, and Sally Dillon hosted a creative and crafty work session. The goal was to make rubber stamped cards and magnets. These items, as well as gift bags with coordinating handmade cards will be available for purchase at the upcoming Raptor Release event on Aug 28th at 6pm at the IAIA Hogan. Proceeds will go to the Santa Fe Raptor Center - <http://santaferaptorcenter.org/>. The Santa Fe Raptor Center recues injured birds, rehabilitates them and releases them. Mark your calendars and come to support this exciting event.



RV Luncheon Ladies craft goodies.

photos by Sally Dillon

## Return of the Raptor Release

By Staci Stevens

Bring your family, friends, neighbors and your camera to what has become one of La Entrada's most popular events of the year – the raptor release party! This year's event will be held on Sunday, August 28th starting at 6:00 PM at the Institute for American Indian Arts's Hogan located at 83 Avan Nu Po.

The Santa Fe Raptor Center will be on site to provide an up-close encounter with education raptors prior to the release of one or more rehabilitated birds - word is that it could be owls again, but you'll have to join us to find out! The Santa Fe Raptor Center is a nonprofit organization that relies on private contributions to finance the rescue, rehab and release of injured birds. With this in mind, Rancho Viejo residents and members of the RV Ladies Lunch Group have been working together to create handmade cards, gift bag sets, and magnets to sell at the event with proceeds going to help feed and care for the birds at the Santa Fe Raptor Center.

We hope you can join us for this one-of-a-kind live bird experience. The event is free but donations are encouraged. Refreshments will be provided.



## Box Tops for Education

By Sally Dillon

Please continue to collect and save Box Tops for Education. These are little cardboard squares located on cereal boxes as well as many other products. The school is able to redeem these for the purchase of badly needed student supplies and materials that enhance learning.

La Entrada at Rancho Viejo  
collects



Once you have collected the box tops, please place them in a zip lock bag and insert them in the clear plastic shoebox on the porch cabinet of Sally and Paul Dillon at 85 Via Orilla Dorado. We, and Amy Biehl School thank you for your support!

For further information about the Box Tops for Education program, check out <http://www.boxtops4education.com>



# La Entrada Neighbor To Neighbor Food Drive

By Paul Dillon

This is the 5th year for The Food Depot's Neighbor to Neighbor Food Drive in Santa Fe. Last year 37 neighborhoods donated more than 20,000 pounds of food. LaEntrada had over 110 households donate 561 pounds of food.



This year's drive will take place Saturday, September 17th from 8am to 12 noon. Our collection of non-perishable food items will again take place at mailboxes north of Rancho Viejo Blvd on Calla Agua Clara. Donation bags, provided by HOAMCO, will be distributed by Proscapre the week before the drive. Our goal this year is to collect 1,000 pounds or more!

We will also be collecting reams of copy paper for Amy Biehl School for those wishing to donate.

Thank you for past contributions! The Food Depot serves all of Northern New Mexico.

## La Entrada Calendar

Board Meeting  
 Thursday, 9/15/2106  
 6:00 p.m.  
 RV Fire Department  
 Community Room  
 37 Rancho Viejo Blvd.

## Neighborhood Watch Local Contacts

Carol Thompson  
 Area Coordinator RV  
 Neighborhood Watch  
 Home: 471-9044  
 Cell: 603-0833  
 Email: [carolath@msn.com](mailto:carolath@msn.com)

**See anything Suspicious?**  
 Call County Sheriff's Office:  
 428-3720.  
 If you wish to remain  
 anonymous, call Crime  
 Stoppers: 955-5050.

## La Entrada Association Needs your Emails

**Owners:** Stay informed about news and events happening in the community. Please be sure that Michael Smith, HOA manager, has your contact information.

**Landlords:** Please keep tenant(s) informed of RV Community's news also. Give Michael Smith, HOA manager, their name(s) and contact information.

# LANDSCAPING MAINTENANCE GUIDELINES

By Paul Dillon

We thought we would take this opportunity to clarify the landscape responsibilities for both Proscap and residents. This hopefully will answer any questions.

**Proscap** - Normal maintenance day is Wednesday, see map for Common Areas maintained also available at Estancia Homes office.

- Parks and Spine Parks-mowing, trash/garbage removal weekly including pet waste
- Sidewalks /Curbs-sprayed to assist in eliminating unwanted vegetation growing through cracks
- Landscaped Islands on Rancho Viejo Blvd. and Avenida dal Sur - maintained weekly
  - Hand or chemical weeding as needed thru season
  - Deadheading of flower beds performed weekly
- Trimming & Pruning - typically pruned once per year between January & March
  - Native shrubs that encroach on walks/driveways/roads will be trimmed on a more regular basis
  - Trees that encroach on sidewalks will be trimmed on request thru Michael at HOAMCO
- Pest Waste Stations-servicing including removing pet waste, replace garbage gag liner, replenish small dog waste bags

## Homeowners – Maintenance

- Maintain front yards including parkways per HOA Charter
  - Weeding and appropriate trimming of shrubs & plants on a regular basis.
- At the present time when front yards and other items are in violation of covenants, notices are sent.
  - Courtesy letter is sent
  - 14 days thereafter, another letter is sent and a \$25.00 fine is imposed
  - 14 days thereafter, another \$25.00 fee is imposed.



## Large Item Pickup

The date for large item pick up in La Entrada is the third Friday of each month.

Please contact Michael Smith at 954-4479 to be put on the schedule. Provide your address, telephone number and description of item(s). Remember to sign up no later than the Monday prior to the Friday pick up dates.

### Items allowed:

1. Furniture: Bulky items cannot exceed eight feet in length, four feet in width or weigh more than 150 pounds.
2. Yard Waste: Not to exceed (1) one regular truck load, loose items must be bundled 2' x 2', or bagged.
3. Moving Boxes: Must be broken down and bundled.
4. Miscellaneous: Not to exceed (1) one regular truck load, loose items must be bundled 2' x 2', or bagged.

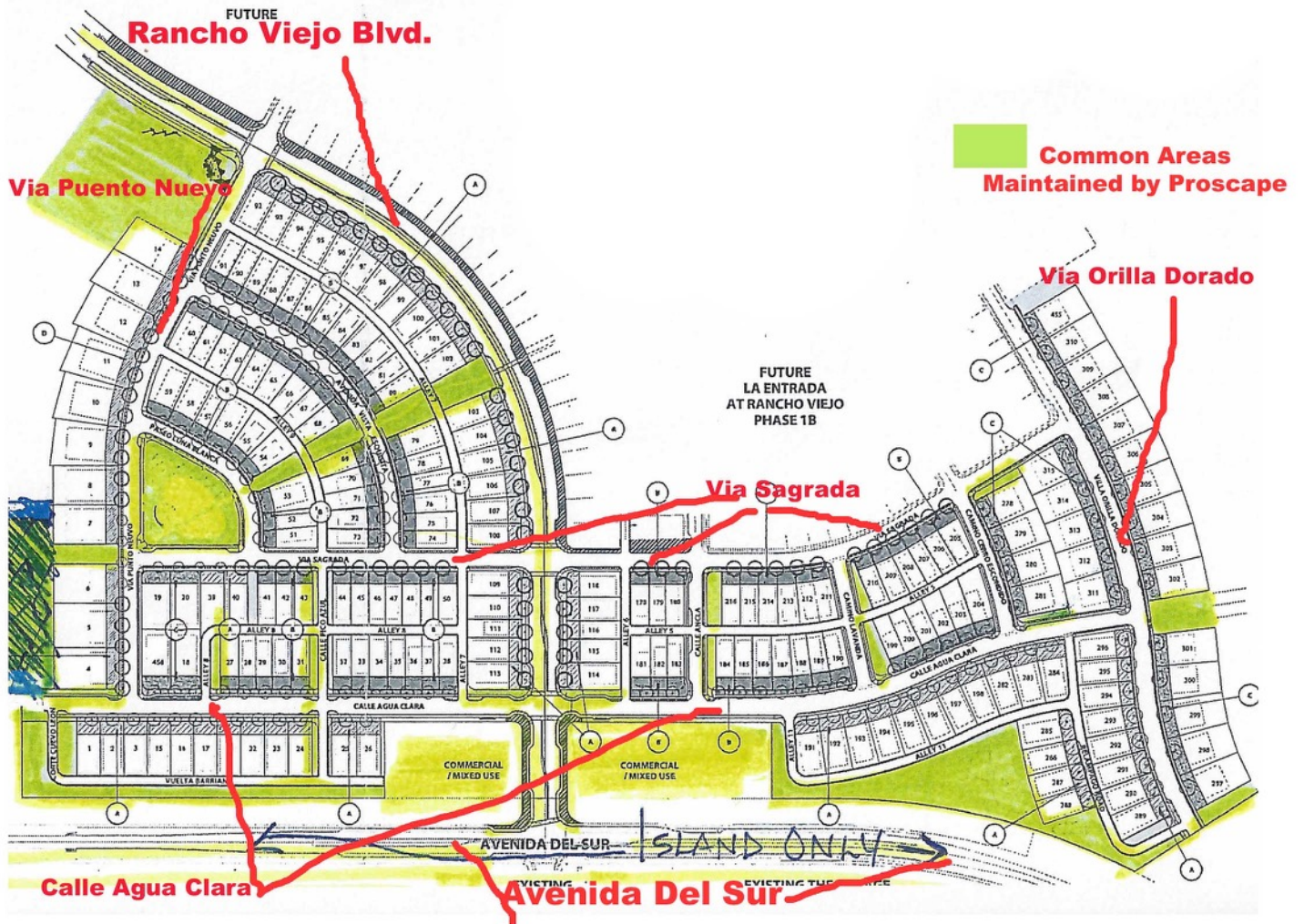
### Items not allowed:

1. Tires
2. Batteries
3. Animal carcasses
4. Paints and solvents
5. Concrete, rocks, dirt, and sod

This service is provided by MCT Waste and is conducted by one employee. Residents must adhere to these restrictions to allow MCT Waste to comply with environmental guidelines and to ensure employee safety.

# Proscape Commons Areas Map

by Sally Dillon



## Firewise Curriculum Rolls Out in Las Vegas

by Dr. Judy Reinhartz

The Firewise to Spark Interest Learning Curriculum implemented with students at Amy Biehl Community School at Rancho Viejo, Santa Fe, NM was rolled out to a national audience at the 2016 National Fire Protection Conference in Las Vegas, NV in June. Conference organizers included for the first time an education strand, and the audience participants were excited to hear about our curriculum project. They were anxious to hear what we did because they wanted ideas to take back to their home communities in the US and Canada. Attendees liked the fundamental principles underlying the curriculum to grow students' science knowledge about the ecology of fire and its role in the Earth's biosphere.

Part of the challenge session participants face in their roles at home is to make presentations to student groups and classes that address scientific information related to fires in their communities and in nature in ways that are engaging and at the audiences' levels of understanding. By introducing the project specifically, its key features and organization, it resonated with conference goers, and they saw ways to adapt it for their locales, including the school wide poster contest, Science Book Buddy component, Sim Table demonstration, and instructional model used to organize the lessons, glimpses of which are captured in the handout below.

Carmen, a second grader at Amy Biehl, summed up the project beautifully when she said that her class "... talked about how to keep our home safe during a wildfire and learned the ready, set, go steps. The title of our poster was 'Keep Your Home and Yard Safe.' The project was fun and was different from what we usually do. We've never made something together as a whole class. Everyone had a part and had fun making the poster." She concluded by saying, "I've always been afraid of fires and after learning what to do during a fire I feel safer."

The Firewise Curriculum story is just beginning, and new chapters will be written and added in the coming months. Judy Reinhartz, [jreinhartz@utep.edu](mailto:jreinhartz@utep.edu).

## Don't Miss La Entrada 2nd Fiesta Picnic!

by Marilyn Morgan

Please join us later this month for an evening of delicious food, music, and best of all, a chance to meet more of your La Entrada neighbors. And if that isn't enough to entice you, we will also have great game prizes including tickets to Meow Wolf, a gift certificate to Tomasita's and more!



And to whet your appetite – Tomasita's will be catering this event and the menu includes Green Chile Enchiladas, Red Chile Beans, Hot Dogs for the less adventurous, and Sopaipillas for all. And, plenty of water to quench your thirst.

Even the Santa Fe Fiesta Council will stop by to join our festivities.

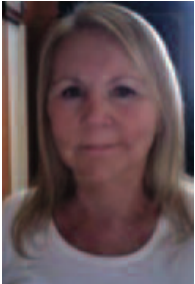
The date will be finalized shortly so watch your email and check the mailboxes for the exact date and time of this fun event!

We look forward to seeing you there!

# LA ENTRADA COMMITTEE REPORTS

## DESIGN REVIEW COMMITTEE

by Judy Keller, Chair



Judy Keller, Chair

Spring has come and gone, and we're well into summer. I know many of you are eager to begin your projects. Before work begins, please read and familiarize yourself with the La Entrada Community Association Homeowner Handbook and the recent changes that are now in effect. This handbook covers design guidelines, architectural standards, association rules and standards for conduct and use. Changes and additions to landscaping (including, side, front and back of your property) MUST be submitted to the DRC for approval prior to installation.

If anyone has accomplished work/projects that were not approved, please submit a request for approval at this time. It is essential that you have all necessary approvals on file for your property to ensure that you are in compliance.

Do not hesitate to contact your HOA Manager with any questions that you may have. The form for submitting landscape drawings, plans and modifications to the exterior of your home is available at the sales office or at [www.laentradaatranchoviejo.org](http://www.laentradaatranchoviejo.org).

## COMMUNICATIONS COMMITTEE

by Sally Dillon, Chair



Sally Dillon, Chair

The La Entrada Communication Committee met on June 20, 2016. The first order of business was to elect a new chairperson. Since Paul has replaced Pat Barnes on the HOA Board, he was no longer permitted to be a committee chair. Sally Dillon was elected the new chair and Marylin Morgan now records the minutes.

Pat reported on another successful Firewise event. She also reported that Rancho Viejo resident Judy Reinhartz, who developed the Firewise Curriculum, taught at Amy Biehl school and Firewise staffer Chris Nyström attended the Firewise National Conference.

The date of the Fiesta Picnic has not been firmed up as of this newsletter publication. Information will be shared via mailbox signage and email blasts.

The date for the Raptor Release is Sun. Aug 28, 2016 at 6pm at the IAIA Hogan. We will have some handmade items to purchase. The proceeds will go to the Santa Fe Raptor Center to help rehabilitate and feed the rescued birds.

The date for the 5th Annual Santa Fe Neighbor to Neighbor Food Drive is Sat. Sept 17, 2016. We would like to exceed last year's goal of 561 lbs. of non-perishable food donated. Along with the Food Drive, we will also be collecting copier paper packages to donate to Amy Biehl School. Speaking of the school, we are continuing to collect Box Tops for Education.

As the Aug. 2016 issue of La Entrada News is published, Dan and Pat will be "retiring" from their Newsletter duties. We thank them so very much for their hard work in making the La Entrada News such a success. Dan has magically developed the format for the newsletter and included fantastic photos. Pat has been a great source of information with the articles she has written. They are thankfully remaining on the Communication Committee.

# La Entrada July 28, 2016 HOA Meeting Report

By Paul Dillon

The meeting was called to order at 6:01pm and the minutes from the previous May 12, 2016 meeting were approved.

The Committee Reports began with Michael Smith reviewing the Financial Statement for the Period Ending June 30, 2016. It was reported that the HOA is plus \$14,000 to date. The Board approved the Financial Report.

Cass Thompson reported that the DRC (Design Review Committee) have now been meeting every other week to be able to process the landscaping designs requests more timely, since there have been many.

Sally Dillon replaces Paul Dillon as Communication Committee chair. She reported that the committee is working several upcoming events, Fiesta Picnic (date TBD), Raptor Release at the IAIA Hogan on Sun Aug 28th at 6pm with the raptors being released at 7pm. The third event, that is upcoming, is the 5th Annual Santa Fe Neighbor to Neighbor Food Drive. Since we have more homes in our community than last year, our goal is to donate 1000lbs. of food!

The last information from the Communication Committee is that Dan Johnsen, who has been doing the digital newsletter is handing it off to Lisa Marcato. All of the committee works together to get the newsletter published.

The meeting was then transitioned to Open Forum and Homeowner Questions. There were a number of new questions/topics discussed. After discussions were concluded, the meeting adjourned at 6:35pm.

## 10th Annual Hearts for Honduras Walk & Run



### Labor Day Sept. 5, 2016

5k Walk/run 8:00AM

10k Run 8:00AM

Kids Fun Run 9:30AM

Technical T-shirts, Door prizes and age group awards! Fun for the whole Family!

Santa Maria de la Paz

Catholic Community

11 College Ave.

Santa Fe, New Mexico

Proceeds Benefit Honduran Mission Group.

Register at <http://www.active.com/santa-fe-nm/running/10th-hearts-for-honduras-run-walk-2016>

## In Memoriam

La Entrada resident Patricia Fogelman Lange, Ph.D died peacefully at the age of 76 on May 27, 2016. Pat received her Ph.D. in Art Education from New York University with focus on Pueblo Pottery Figurines. In pursuit of her lifelong passion, she relocated to Santa Fe more than 25 years ago to continue her research in Native American art. Pat was also a co-curator for a show at the Wheelwright Museum of the American Indians in Santa Fe, an Adjunct Instructor at the Santa Fe Community College, Scholar in Residence at the Institute of American Indians and a Research Associate at the Museum of New Mexico. She will be missed in our community.



# 7th Annual Neighborhood Watch Yard Sale

by Pat Barnes

On a beautiful Saturday morning, July 30th, the Rancho Viejo Neighborhood Watch held its 7th Annual Yard Sale. It was a busy day and, according to Susan Young, the final total came in at \$883.07.



Photograph by Dan Johnsen

This is the perfect time to thank all of the wonderful and generous neighbors who donated so many of their treasured items for this good cause. Representatives from the South Association, North Association and La Entrada Association contributed to the effort. We could not have held this yard sale without all these items and we are very grateful for your support of our community.

Another big "Thank You" to all the workers who also made our yard sale possible. All of them

generously gave of their time and efforts to gather all of the items, price each one individually, and move it out to the park to be sold. This always takes a tremendous effort. After the yard sale was over, these same dedicated people again gathered up all of the leftovers to donate to Big Brothers/Big Sisters. In alphabetical order, "hats off" to: Pat Barnes, Kathy Brown, Barbara Conkey, Russell Fory, Donald Graff, Lisa Marcato, and Mike and Sherry Weymouth.

A special thanks goes to Jay Winter, owner of the Commercial Center, Village Market, and Tathagata Coffee Shop space. Jay generously gave us access to one of his offices so we could store all our items near the park, which saved us a great deal of time and energy.

In an upcoming issue, we will inform you how the profits were used to help our community. Thanks to all of you!

## Citizens' Police Academy For Civilians

by Kathy Brown

Learn about the challenges and professionalism of our local law enforcement. The Academy will start this fall on our south side of town-typically Thursday evenings for about twelve weeks.

Several La Entrada residents completed the course in the past and learned a lot about our County Sheriff, City police and Santa Fe in general.

Watch for upcoming details such as start dates and application form.

## Show Off Your Landscaping Improvements: Submit a Photo!

In this issue, pages 4 and 5 deal with the landscaping responsibilities regarding common areas of our development and public facing areas of your residence. But what about those areas that are not public facing, like your interior courtyards and back yards; what have you done to improve your personal space? The *La Entrada News* would like to share photographs of your landscaping efforts with the rest of the community!

Requirements are (relatively) simple. Email digital images, preferably sized 2250 pixels (or larger) on the long edge, to [Lisa Marcato](#) or [Dan Johnsen](#). Include your name, street address and a couple lines explaining what is pictured. Photos must be ones that you have the right to publish and be of your property in La Entrada; we're sure some of you have beautiful homes in other places, but this is for La Entrada landscaping only. Submission of the photographs grants the *La Entrada News* and the [www.laentradaatranchoviejo.org](http://www.laentradaatranchoviejo.org) website the right to use and publish these photographs. Here's one to get you started.

This photo shows landscape lighting installed by Dan Johnsen and landscaper Malvina Canon in Johnsen's front courtyard at 54 Via Punto Nuevo. The Johnsens' front door is approximately 56 feet from the entry gate and navigation of the courtyard was difficult at night.

The lights are 12V, 4watt, warm white, Kichler LEDs with permanent underground wiring, a photocell to turn the lights on at dusk and a timer to turn them off at 11:30pm. Johnsen says he will be happy to share information about the installation, subcontractors, parts sources and even his successful DRC request; the only question from DRC came from Cass Thompson who asked, "These will be WHITE lights, won't they?" :-)



## Please Pick Up After Your Pet

It doesn't take much to remember that we have pets in our community. In fact, if you don't watch your step, you are liable to step in one such reminder. Besides being unsightly and smelly, animal waste can be hazardous to the health of our children who play in the community and other pets. One of the most common forms of disease transmission between dogs is through fecal matter.

When walking your dog in our community, remember that it should be leashed. Also, it is important to remember to immediately clean up after your pet. Take along a baggie with you or get one from the "doggie stations" to pick up waste and then dispose of it properly.

By taking a few simple steps to clean up after your pet, you can contribute not only to the beautification of our community, but also towards the elimination of one of the most irritating nuisances in our community. Thank you for your cooperation!

